

# How to use evercare® Silicone Postoperative Dressing

REF: EOP080060A, EOP150090A, EOP100090A, EOP150100A, EOP175150A, EOP200100A, EOP250100A, EOP250200A, EOP300100A, EOP350100A.

evercare® Silicone Postoperative Dressing may be used by lay person under supervision of health care professionals.

1

Gently cleanse the wound and the surrounding skin in accordance with clinical practice.

Dry the surrounding skin thoroughly.

2 Pouch opening

Open the sterile package and remove the dressing.

The dressing needs to overlap the wound by at least 1–2 cm margin to protect the surrounding skin from maceration and fixate the dressing securely.

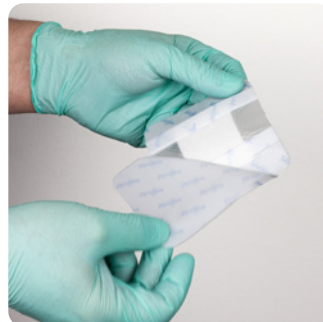


3

For dressing with three-section release films, remove the middle release film first. Apply the adherent side to the wound.

For dressing with two release films, peel off one part of the release film and fixate the dressing to the skin.

Do not stretch and avoid wrinkles.



4

Fixate the dressing in place. Remove other release films completely and fixate the dressing securely in place.

