

How to use evercare® inLine

REF: 10682, 10672, 10673, 10675, 10684, 10680.

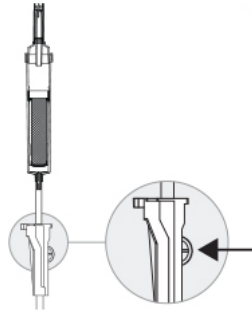
Priming recommendation to prime evercare® inLine Transfusion set.

Please note! See the package for complete IFU instructions for use, this is only a guide for users.
DO NOT OVER-TIGHTEN connections. DO NOT USE any instruments to tighten connections.

Priming

1

Unwrap the IV set and check whether the roller clamp is open.



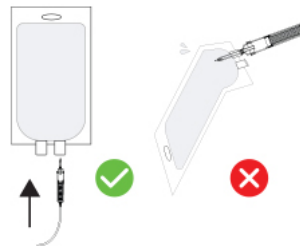
2

Change position of the roller clamp and control that the tubing is unaffected and close it.



3

Place the bag/container horizontal on a tabletop and insert $\frac{3}{4}$ of the length of the spike horizontally by using a turning motion.



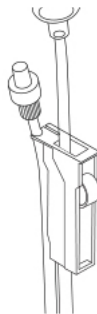
4

Invert the container/bag and hang it from the IV pole or similar.



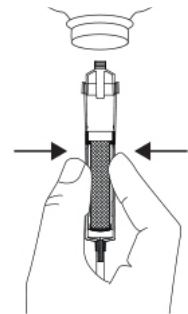
5

Attach the tubing to the tube holder at the roller clamp.



6

Squeeze gently the drip chamber 3–5 times to fill half of the drip chamber. (Too aggressive squeeze can lead to mixed air fluid below the drip chamber.)



How to use evercare® inLine

REF: 10682, 10672, 10673, 10675, 10684, 10680.

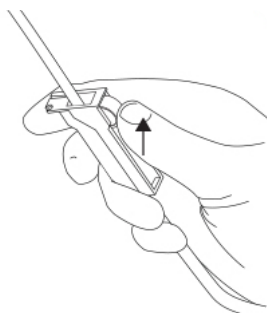
Priming recommendation to prime evercare® inLine Transfusion set.

Please note! See the package for complete IFU instructions for use, this is only a guide for users.
DO NOT OVER-TIGHTEN connections. DO NOT USE any instruments to tighten connections.

Priming

6

Open the roller clamp until the complete tubing is primed.



7

Close the roller clamp.

