

Staff Clothing

Presented by

evercare[®]
medical

September 1, 2023

Embra®

Caring for the future

Embra®, derived from the word “embrace” stands for a clear commitment to embrace both environmental and social sustainability. Embra® works consistently and continuously to give the world healthcare solutions that focus on lowering environmental impact, while delivering quality and performance for patients and caregivers.

Our mission is to develop responsible healthcare solutions focused on lowering the environmental impact while heightening quality for patients and caregivers. We always consider utilizing innovative processes and raw materials that enable us to reach our goals. We also hold each and every Embra® product to strong ethical codes, and to quality reviews throughout its entire value chain.

This is the Embra® way. It's our way of caring for patients, caregivers and the future

evercare®

Solutions for premium care

The evercare® brand is composed of a premium product range that delivers a comprehensive assortment of examination gloves, surgical gowns and drapes, and wound care, infusion and injection solutions. Offering premium value, more features, and high quality across the product portfolio, evercare® is driven by continuous development and innovation to treat patients with the best possible clinical solutions.

SELEFA®

Affordable solutions for care

The SELEFA® brand provides value for money through its wide range of affordable products, including examination gloves, paper and plastic consumables, non-woven products, bandages and gauze.

Development under the brands Embra®, evercare® and SELEFA® follows a quality management system with established working methods and processes according to the Medical Device Regulation (MDR).

We are powered by a commitment to meeting customer needs, undertaking extensive quality control, and investing in efforts to reduce our impact on the environment, all in the name of improved patient outcomes.

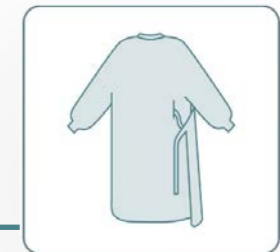
Stay updated!



Access our **web page** to find your nearest distributor.



Watch our **How to use & Donning guides** with videos and instructions.



Subscribe and hit the notification bell so you never miss out on our latest videos on **YouTube!**



Follow our **LinkedIn** page and stay updated with our latest news.

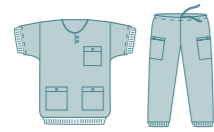


Content

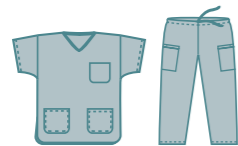
Staff clothing



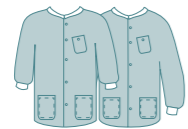
Aprons	6
SELEFA® Aprons	7
Embra® Aprons	12



evercare® Clean Air suits	14
-------------------------------------	----



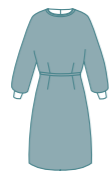
evercare® Scrub Suits	18
---------------------------------	----



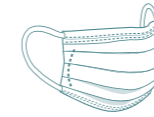
evercare® Warm up jackets	20
-------------------------------------	----



Headwear	22
evercare® Round caps	23
Embra® Surgical caps	24
Embra® Surgical hoods	30



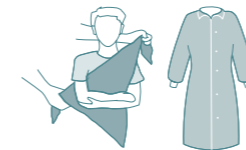
evercare® Isolation gowns	36
-------------------------------------	----



evercare® Medical face masks	40
Medical face masks type II	41
Medical face masks type IIR	44



evercare® OP-gowns	48
------------------------------	----



Patient clothing & care.	56
evercare® Medi Blanket	58
SELEFA® Bed protection	59
SELEFA® Bib	65
SELEFA® Triangular sling	66
Embra® Grabage bag	67

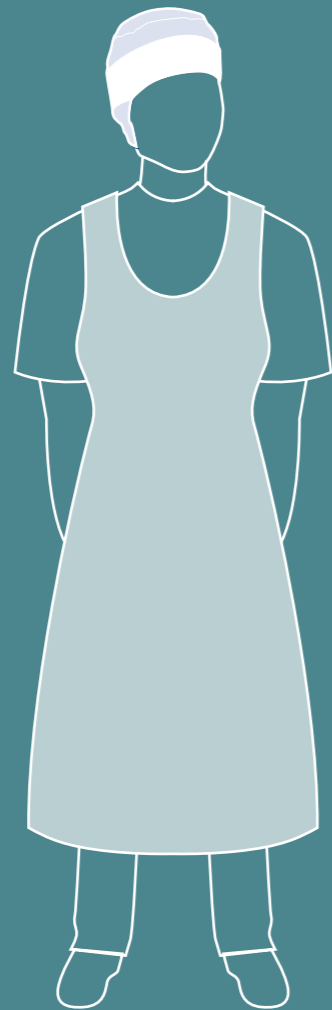


Shoe covers	68
SELEFA® Shoe covers	69
Embra® Shoe covers	70



evercare® Ponchos	72
-----------------------------	----

Aprons



SELEFA[®] Apron without sleeves, NOTOS

REF: 210415

SELEFA[®] Apron without sleeves, NOTOS is a disposable apron made of fluid resistant polyethylene that help to protect clothing from spills and splashes during medical procedures and cleaning tasks. Also ideal for use in food preparations and in industrial applications.

Key Features

- ▶ Disposable fluid resistant Apron
- ▶ Convenient pullover
- ▶ White, Embossed
- ▶ Individually folded



REF	DESCRIPTION	SIZE	PACK COUNT dispenser/carton
210415	Apron without sleeves, NOTOS, embossed, White	72 x 118 cm	100 / 500

Sales Unit: Transport Carton



SELEFA® Apron without sleeves, DIVINA

REF: 210433

SELEFA® Apron without sleeves, DIVINA is a disposable apron made of fluid resistant polyethylene that help to protect clothing from spills and splashes during medical procedures and cleaning tasks. Also ideal for use in food preparations and in industrial applications.

Key Features

- ▶ Disposable fluid resistant Apron
- ▶ Convenient pullover
- ▶ Transparent, Embossed
- ▶ Available on a roll of 50



REF	DESCRIPTION	SIZE	PACK COUNT dispenser/carton
210433	Apron without sleeves, DIVINA, embossed, Transparent	81 x 125 cm	50 / 500

Sales Unit: Transport Carton



SELEFA® Apron without sleeves, EMMY

REF: 210434

SELEFA® Apron without sleeves, EMMY is a disposable apron made of fluid resistant polyethylene that help to protect clothing from spills and splashes during medical procedures and cleaning tasks. Also ideal for use in food preparations and in industrial applications.

Key Features

- ▶ Disposable fluid resistant Apron
- ▶ Convenient pullover
- ▶ Transparent, Embossed
- ▶ Individually folded



REF	DESCRIPTION	SIZE	PACK COUNT dispenser/carton
210434	Apron without sleeves, EMMY, embossed, Transparent	81 x 150 cm	40 / 400

Sales Unit: Transport Carton



SELEFA® Apron without sleeves, BOSCO

REF: 21043050

SELEFA® Apron without sleeves, BOSCO is a disposable apron made of fluid resistant polyethylene that help to protect clothing from spills and splashes during medical procedures and cleaning tasks. Also ideal for use in food preparations and in industrial applications.

Key Features

- ▶ Disposable fluid resistant Apron
- ▶ Convenient pullover
- ▶ Transparent, Embossed
- ▶ Individually folded



REF	DESCRIPTION	SIZE	PACK COUNT dispenser/carton
21043050	Apron without sleeves, BOSCO, embossed, Transparent	81 x 125 cm	50 / 500

Sales Unit: Transport Carton



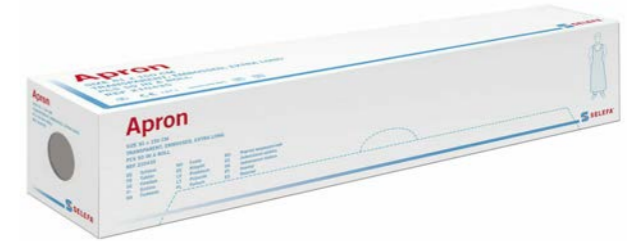
SELEFA® Apron without sleeves, FELIX

REF: 210435

SELEFA® Apron without sleeves, FELIX is a disposable apron made of fluid resistant polyethylene that help to protect clothing from spills and splashes during medical procedures and cleaning tasks. Also ideal for use in food preparations and in industrial applications.

Key Features

- ▶ Disposable fluid resistant Apron
- ▶ Convenient pullover
- ▶ Transparent, Embossed
- ▶ Available on a roll of 50



REF	DESCRIPTION	SIZE	PACK COUNT dispenser/carton
210435	Apron without sleeves, FELIX, embossed, Transparent	81 x 150 cm	50 / 500

Sales Unit: Transport Carton

Embra® Apron without sleeves, BOSCO Green

REF: 3210446

Embra® Apron without sleeves, BOSCO Green is a disposable apron made of fluid resistant polyethylene that help to protect clothing from spills and splashes during medical procedures and cleaning tasks. Also ideal for use in food preparations and in industrial applications.

Key Features

- ▶ Carbon-14 certificate available to ensure at least 70% of our materials come from a renewable source.
- ▶ Carbon footprint study (LCA) is conducted according to GHG protocol and is reviewed by the Climate Neutral Group. Factsheet available.
- ▶ This product's CO2 footprint is proven by a Life Cycle Analysis to be at least 20% lower than a similar standard product.
- ▶ Polyethylene > 70% biobased HDPE from renewable resources (sugar cane ethanol)
- ▶ Transparent, Embossed
- ▶ Individually folded
- ▶ Fully recyclable as plastic recycling.
- ▶ Suitable for use in industrial applications and food preparation.



REF	DESCRIPTION	SIZE	PACK COUNT dispenser/carton
3210446	Apron without sleeves, BOSCO Green, embossed, Transparent	81 x 125 cm	50 / 500

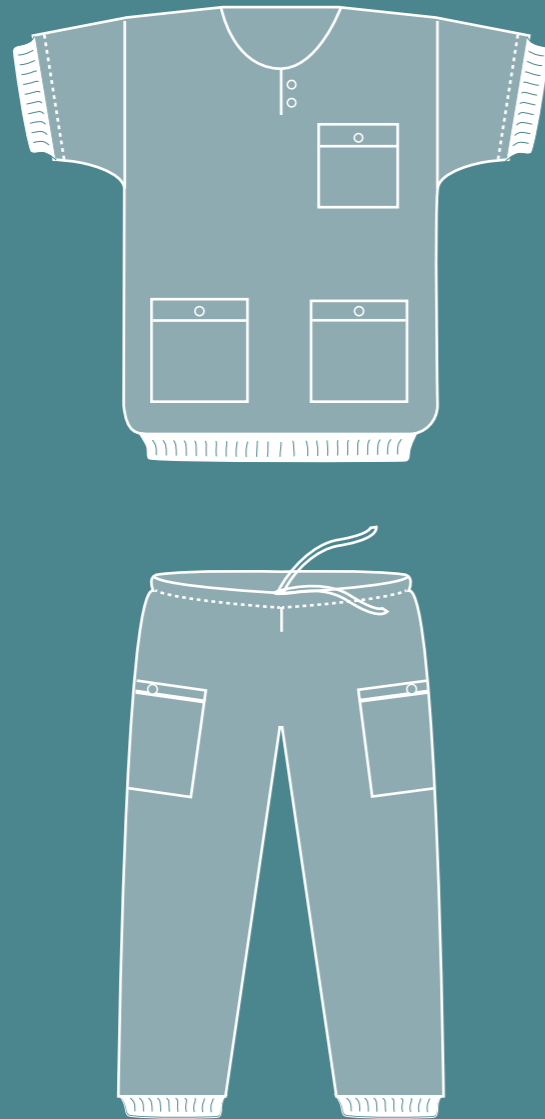
Sales Unit: Transport Carton



Thank you for choosing **Embra**®

Together we can make a positive difference.

evercare® Clean Air suits



evercare® Optimia Clean Air Suit

REF: 2660, 2661, 2662, 2663, 2664, 2665, 2666, 2667, 2668, 2669, 2670, 2671, 2672, 2673

evercare® Optimia Clean Air Suits can contribute to ultra clean air in the operating room. Decreasing amount of airborne bacteria in the OR can be an important part of infection prevention and infection control. The breathable low linting material with low particle release and resistance to microbial penetration complies to EN 13795 for Clean Air Suits. A two-piece suit with shirt and pants packed separately for individual fit and a comfortable design.

Key Features

- ▶ Complies to EN13795-2 for clean air suits
- ▶ Anti-static
- ▶ 3 pockets on shirt, 2 on pants
- ▶ Pants have tie-band in waist for individual adjustment
- ▶ Available in sizes XS-XXXL
- ▶ Single use
- ▶ Soft comfort layer closest to body
- ▶ Snap closure at neck
- ▶ Cuffs in sleeves, waist and legs



REF	DESCRIPTION	SIZE	PACK COUNT dispenser/carton
2660	Optimia clean air suit, shirt, Blue	XS	1 / 30
2661	Optimia clean air suit, shirt, Blue	S	1 / 25
2662	Optimia clean air suit, shirt, Blue	M	1 / 25
2663	Optimia clean air suit, shirt, Blue	L	1 / 25
2664	Optimia clean air suit, shirt, Blue	XL	1 / 25
2665	Optimia clean air suit, shirt, Blue	XXL	1 / 25
2666	Optimia clean air suit, shirt, Blue	XXXL	1 / 25
2667	Optimia clean air suit, pants, Blue	XS	1 / 25
2668	Optimia clean air suit, pants, Blue	S	1 / 25
2669	Optimia clean air suit, pants, Blue	M	1 / 25
2670	Optimia clean air suit, pants, Blue	L	1 / 25
2671	Optimia clean air suit, pants, Blue	XL	1 / 25
2672	Optimia clean air suit, pants, Blue	XXL	1 / 25
2673	Optimia clean air suit, pants, Blue	XXXL	1 / 25

evercare® XP Clean Air Suit

REF: 260110, 260111, 260112, 260113, 260114, 260115, 260116, 260210, 260211, 260212, 260213, 260214, 260215, 260216

evercare® XP Clean Air Suits can contribute to ultra clean air in the operating room. Decreasing amount of airborne bacteria in the OR can be an important part of infection prevention and infection control. The breathable low linting material with low particle release and resistance to microbial penetration complies to EN 13795 for Clean Air Suits. A two-piece suit with shirt and pants packed separately for individual fit and a comfortable design.

Key Features

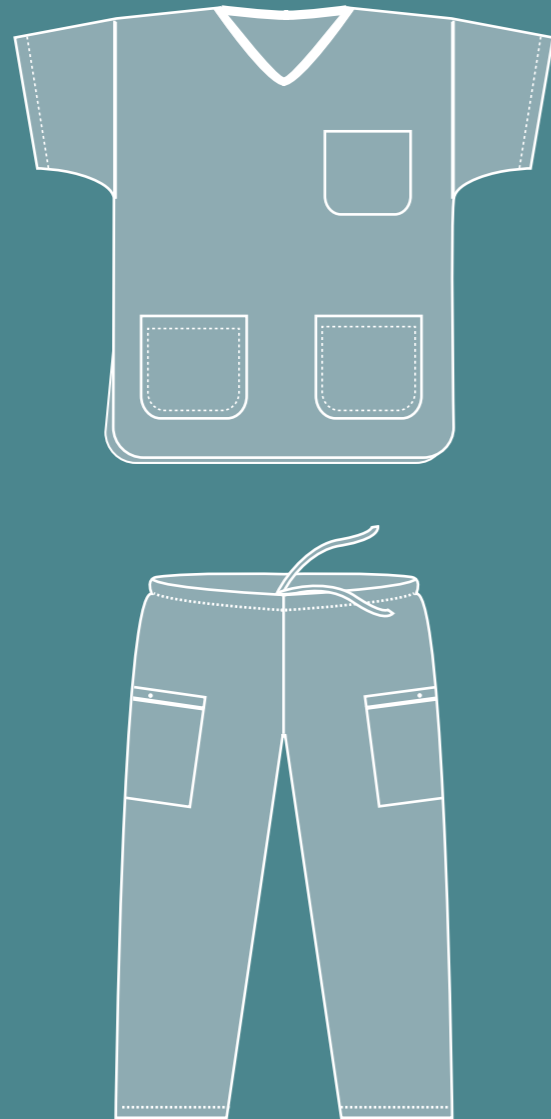
- ▶ Complies to EN13795-2 for Clean Air Suits
- ▶ Anti-static
- ▶ 3 pockets on shirt, 2 on pants
- ▶ Pants have tie-band in waist for individual adjustment
- ▶ Available in sizes XS-XXXL
- ▶ Single use
- ▶ Cuffs in sleeves and legs, shirt has elastic band in waist



REF	DESCRIPTION	SIZE	PACK COUNT dispenser/carton
260110	XP Clean Air Suit, Shirt, with cuffs, Blue	XS	1 / 30
260111	XP Clean Air Suit, Shirt, with cuffs, Blue	S	1 / 30
260112	XP Clean Air Suit, Shirt, with cuffs, Blue	M	1 / 30
260113	XP Clean Air Suit, Shirt, with cuffs, Blue	L	1 / 30
260114	XP Clean Air Suit, Shirt with cuffs, Blue	XL	1 / 30
260115	XP Clean Air Suit, Shirt, with cuffs, Blue	XXL	1 / 30
260116	XP Clean Air Suit, Shirt, with cuffs, Blue	XXXL	1 / 30
260210	XP Clean Air Suit, Pants, with cuffs, Blue	XS	1 / 30
260211	XP Clean Air Suit, Pants, with cuffs, Blue	S	1 / 30
260212	XP Clean Air Suit, Pants, with cuffs, Blue	M	1 / 30
260213	XP Clean Air Suit, Pants, with cuffs, Blue	L	1 / 30
260214	XP Clean Air Suit, Pants, with cuffs, Blue	XL	1 / 30
260215	XP Clean Air Suit, Pants, with cuffs, Blue	XXL	1 / 30
260216	XP Clean Air Suit, Pants, with cuffs, Blue	XXXL	1 / 30

Sales Unit: Transport Carton

evercare® Scrub Suits



evercare® XP Scrub suits

REF: 260100, 260101, 260102, 260103, 260104, 260105, 260106, 260200, 260201, 260202, 260203, 260204, 260205, 260206

evercare® XP Scrub Suits offer a high quality and cost effective range of single use unisex staff clothing. All are CE marked medical devices and made of soft nonwoven material with low linting, contributing to efficient infection control in hospitals. A comfortable two-piece suit with shirt and pants packed separately for individual fit to meet your needs and preferences. Available in a wide range of sizes and with several convenient pockets.

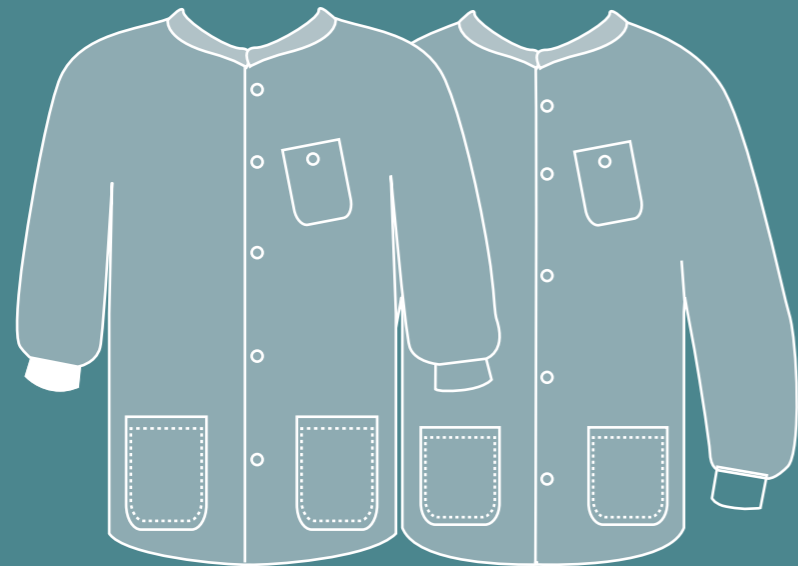
Key Features

- ▶ Breathable material with low particle release and with resistance to microbial penetration
- ▶ Anti-static
- ▶ 3 pockets on shirt, 2 on pants
- ▶ Tie-band in waist of pants for individual adjustment
- ▶ Single-use
- ▶ Available in size XS to XXXL



REF	DESCRIPTION	SIZE	PACK COUNT dispenser/carton
260100	XP Scrub Suit, Shirt, Blue	XS	1 / 30
260101	XP Scrub Suit, Shirt, Blue	S	1 / 30
260102	XP Scrub Suit, Shirt, Blue	M	1 / 30
260103	XP Scrub Suit, Shirt, Blue	L	1 / 30
260104	XP Scrub Suit, Shirt, Blue	XL	1 / 30
260105	XP Scrub Suit, Shirt, Blue	XXL	1 / 30
260106	XP Scrub Suit, Shirt, Blue	XXXL	1 / 30
260200	XP Scrub Suit, Pants, Blue	XS	1 / 30
260201	XP Scrub Suit, Pants, Blue	S	1 / 30
260202	XP Scrub Suit, Pants, Blue	M	1 / 30
260203	XP Scrub Suit, Pants, Blue	L	1 / 30
260204	XP Scrub Suit, Pants, Blue	XL	1 / 30
260205	XP Scrub Suit, Pants, Blue	XXL	1 / 30
260206	XP Scrub Suit, Pants, Blue	XXXL	1 / 30

evercare® Warm up jackets



evercare® XP Warm-up jacket

REF: 260010, 260011, 260012, 260013, 260014, 260015, 260016, 260020, 260021, 260022, 260023, 260024, 260025, 260026

evercare® Warm-up jackets keep you warm and comfortable without compromising on patient safety. They are made from the same material as Clean Air suits which means low linting and resistance to bacterial penetration. Several practical pockets to bring all you need with you. Buttons to be able to close the warm up jacket, and comfortable cuffs in sleeves and neckline. Available in several sizes and with short, medium or long sleeves to fit your needs for all situations.

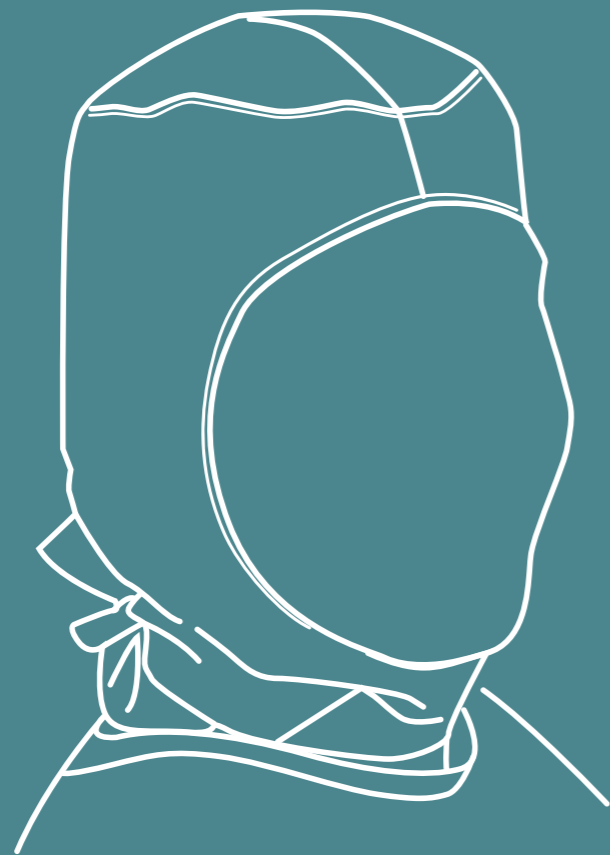
Key Features

- ▶ Unisex design
- ▶ Seven different sizes
- ▶ Two waist pockets
- ▶ Low linting
- ▶ Resistance to bacterial penetration
- ▶ Water repellent
- ▶ Anti-static treated
- ▶ Material properties in accordance to EN13795-2 for Clean Air Suit



REF	DESCRIPTION	SIZE	PACK COUNT dispenser/carton
260010	XP Warm-up jacket with medium sleeves, Blue	XS	10 / 30
260011	XP Warm-up jacket with medium sleeves, Blue	S	10 / 30
260012	XP Warm-up jacket with medium sleeves, Blue	M	10 / 30
260013	XP Warm-up jacket with medium sleeves, Blue	L	10 / 30
260014	XP Warm-up jacket with medium sleeves, Blue	XL	10 / 30
260015	XP Warm-up jacket with medium sleeves, Blue	XXL	10 / 30
260016	XP Warm-up jacket with medium sleeves, Blue	XXXL	10 / 30
260020	XP Warm-up jacket with long sleeves, Blue	XS	10 / 30
260021	XP Warm-up jacket with long sleeves, Blue	S	10 / 30
260022	XP Warm-up jacket with long sleeves, Blue	M	10 / 30
260023	XP Warm-up jacket with long sleeves, Blue	L	10 / 30
260024	XP Warm-up jacket with long sleeves, Blue	XL	10 / 30
260025	XP Warm-up jacket with long sleeves, Blue	XXL	10 / 30
260026	XP Warm-up jacket with long sleeves, Blue	XXXL	10 / 30

Headwear



evercare® Round cap Rondo Standard

REF: 2740-02, 2742-02, 2750-02, 2752-02, 2760-02, 2762-02

evercare® Headweares are designed to help prevent foreign particles such as hair or skin scales falling from medical personnel into the wound during surgical interventions. evercare® round cap Rondo Standard is made of a new light weight SMS material that provides high protection against particles from the scalp of the wearer as well as good fluid protection. The lower use of polypropylene material means a reduced environmental impact. Rondo is an economical range of headwear covering all basic needs. Rondo is also worn by medical personnel and patients in other environments for hygiene reasons. Available in different colors and sizes.

Key Features

- ▶ Reduces the risk of particles falling into the wound
- ▶ Reduced environmental impact
- ▶ M, L and XL size
- ▶ Different colors



REF	DESCRIPTION	SIZE	PACK COUNT dispenser/carton
2740-02	Round cap Rondo Standard, Green	M, 48 cm	150 / 900
2742-02	Round cap Rondo Standard, Blue	M, 48 cm	150 / 900
2750-02	Round cap Rondo Standard, Green	L, 52 cm	150 / 900
2752-02	Round cap Rondo Standard, Blue	L, 52 cm	150 / 900
2760-02	Round cap Rondo Standard, Green	XL, 55 cm	150 / 900
2762-02	Round cap Rondo Standard, Blue	XL, 55 cm	150 / 900

Sales Unit: Transport Carton

Embra® Surgical cap Tricolor

REF: 277003

Embra® Headweares are designed to help prevent foreign particles such as hair or skin scales falling from medical personnel into the wound during surgical interventions. Our surgical caps are suitable for most interventions and situations and are available in a wide range of colors and designs. Embra® Surgical cap Tricolor features a wide sweatband that surrounds the whole head, providing optimal sweat absorption and comfort. The very popular cap is chosen for its comfortable design with sweatband. Made in a soft and breathable viscose nonwoven material, it also provides plenty of room for long hair. Elastic in the back to provide a secure fit.

Key Features

- ▶ Universal size
- ▶ Wide sweat band around the head
- ▶ Elastic in the back
- ▶ Good coverage also for long hair
- ▶ 80% viscose, 20% polyester meaning most of the materials are from renewable resources
- ▶ Viscose from sustainable forests (FSC-certified)
- ▶ Production moved from Asia to Europe to further reduce emissions
- ▶ High-performance headwear protects from falling skin cells or stray hairs
- ▶ Breathable and comfortable headwear
- ▶ Drapes easily
- ▶ Suitable for long shifts in the most intense surgical environments
- ▶ Tested for skin irritation, skin sensitisation and in vitro cytotoxicity according to EN ISO 10993



REF	DESCRIPTION	SIZE	PACK COUNT dispenser/carton
277003	Surgical cap Tricolor, wide sweatband, Blue	Universal	50 / 300

Sales Unit: Transport Carton

Embra® Surgical cap Kolumbus

REF: 277703

Embra® Headweares are designed to help prevent foreign particles such as hair or skin scales falling from medical personnel into the wound during surgical interventions. Our surgical caps are suitable for most interventions and situations and are available in a wide range of colors and designs. Embra® surgical cap Kolumbus is frequently used when there is no need for a surgical hood/helmet. It can be shaped/folded in the front to fit individual preferences. Made in a soft and breathable viscose nonwoven material. Comes in two colors and is elastic in the back for secure fit.

Key Features

- ▶ Universal size
- ▶ Can be shaped/folded in the front
- ▶ Elastic in the back
- ▶ 80% viscose, 20% polyester meaning most of the materials are from renewable resources
- ▶ Viscose from sustainable forests (FSC-certified)
- ▶ Production moved from Asia to Europe to further reduce emissions
- ▶ High-performance headwear protects from falling skin cells or stray hairs
- ▶ Breathable and comfortable headwear
- ▶ Drapes easily
- ▶ Suitable for long shifts in the most intense surgical environments
- ▶ Tested for skin irritation, skin sensitisation and in vitro cytotoxicity according to EN ISO 10993



REF	DESCRIPTION	SIZE	PACK COUNT dispenser/carton
277703	Surgical cap Kolumbus, Blue	Universal	100 / 600

Sales Unit: Transport Carton

Embra® Surgical cap Tina

REF: 278203

Embra® Headweares are designed to help prevent foreign particles such as hair or skin scales falling from medical personnel into the wound during surgical interventions. Our surgical caps are suitable for most interventions and situations and are available in a wide range of colors and designs. Embra® surgical cap Tina serves staff who wants maximum hair coverage. Made in a soft and breathable viscose nonwoven material. There is a good coverage also for long hair and an elastic in the back for a secure fit. Available in two colors.

Key Features

- ▶ Universal size
- ▶ Designed for maximum hair coverage
- ▶ Elastic in the back
- ▶ 80% viscose, 20% polyester meaning most of the materials are from renewable resources
- ▶ Viscose from sustainable forests (FSC-certified)
- ▶ Production moved from Asia to Europe to further reduce emissions
- ▶ High-performance headwear protects from falling skin cells or stray hairs
- ▶ Breathable and comfortable headwear
- ▶ Drapes easily
- ▶ Suitable for long shifts in the most intense surgical environments
- ▶ Tested for skin irritation, skin sensitisation and in vitro cytotoxicity according to EN ISO 10993



REF	DESCRIPTION	SIZE	PACK COUNT dispenser/carton
278203	Surgical cap Tina, Green	Universal	100 / 600

Sales Unit: Transport Carton

Embra® Surgical cap Tina

REF: 278303

Embra® Headweares are designed to help prevent foreign particles such as hair or skin scales falling from medical personnel into the wound during surgical interventions. Our surgical caps are suitable for most interventions and situations and are available in a wide range of colors and designs. Embra® surgical cap Tina serves staff who wants maximum hair coverage. Made in a soft and breathable viscose nonwoven material. There is a good coverage also for long hair and an elastic in the back for a secure fit. Available in two colors.

Key Features

- ▶ Universal size
- ▶ Designed for maximum hair coverage
- ▶ Elastic in the back
- ▶ 80% viscose, 20% polyester meaning most of the materials are from renewable resources
- ▶ Viscose from sustainable forests (FSC-certified)
- ▶ Production moved from Asia to Europe to further reduce emissions
- ▶ High-performance headwear protects from falling skin cells or stray hairs
- ▶ Breathable and comfortable headwear
- ▶ Drapes easily
- ▶ Suitable for long shifts in the most intense surgical environments
- ▶ Tested for skin irritation, skin sensitisation and in vitro cytotoxicity according to EN ISO 10993



REF	DESCRIPTION	SIZE	PACK COUNT dispenser/carton
278303	Surgical cap Tina, Blue	Universal	100 / 600

Sales Unit: Transport Carton

Embra® Surgical cap Julia

REF: 278403

Embra® Headweares are designed to help prevent foreign particles such as hair or skin scales falling from medical personnel into the wound during surgical interventions. Our surgical caps are suitable for most interventions and situations and are available in a wide range of colors and designs. Embra® surgical cap Julia is specially designed for long hair. Made in a soft and breathable viscose nonwoven material.

Key Features

- ▶ Universal size
- ▶ Designed for long hair
- ▶ 80% viscose, 20% polyester meaning most of the materials are from renewable resources
- ▶ Viscose from sustainable forests (FSC-certified)
- ▶ Production moved from Asia to Europe to further reduce emissions
- ▶ High-performance headwear protects from falling skin cells or stray hairs
- ▶ Breathable and comfortable headwear
- ▶ Drapes easily
- ▶ Suitable for long shifts in the most intense surgical environments
- ▶ Tested for skin irritation, skin sensitisation and in vitro cytotoxicity according to EN ISO 10993



REF	DESCRIPTION	SIZE	PACK COUNT dispenser/carton
278403	Surgical cap Julia, for long hair, Blue	Universal	50 / 300

Sales Unit: Transport Carton

Embra® Surgical cap Tristan

REF: 279103

Embra® Headweares are designed to help prevent foreign particles such as hair or skin scales falling from medical personnel into the wound during surgical interventions. Our surgical caps are suitable for most interventions and situations and are available in a wide range of colors and designs. Embra® surgical cap Tristan is a popular design in the USA. Its smaller design does not fully cover ears and long hair. Made in a soft and breathable viscose nonwoven material. The top of the cap is made of thinner nonwoven material (white) for better breathability. The tie band in the back allows for individual fit.

Key Features

- ▶ Universal size
- ▶ Top of cap in thinner nonwoven material for better breathability
- ▶ Tie band in the back allows for secure fit
- ▶ 80% viscose, 20% polyester meaning most of the materials are from renewable resources
- ▶ Viscose from sustainable forests (FSC-certified)
- ▶ Production moved from Asia to Europe to further reduce emissions
- ▶ High-performance headwear protects from falling skin cells or stray hairs
- ▶ Breathable and comfortable headwear
- ▶ Drapes easily
- ▶ Suitable for long shifts in the most intense surgical environments
- ▶ Tested for skin irritation, skin sensitisation and in vitro cytotoxicity according to EN ISO 10993



REF	DESCRIPTION	SIZE	PACK COUNT dispenser/carton
279103	Surgical cap Tristan, Green	Universal	100 / 600

Sales Unit: Transport Carton

Embra® Surgical hood James

REF: 277403

Embra® Headweares are designed to help prevent foreign particles such as hair or skin scales falling from medical personnel into the wound during surgical interventions. These very popular surgical hoods come with different special features and designs, such as integrated sweatbands for additional comfort, or open design for easier dressing placed on the head instead of over the head. Embra® Surgical hood James is a light version helmet without shoulder coverings designed for staff that for any reason cannot use shoulder coverings. A surgical hood with neck protection made of soft breathable viscose nonwoven material.

Key Features

- ▶ Universal size
- ▶ Neck protection (not shoulder protection)
- ▶ 80% viscose, 20% polyester meaning most of the materials are from renewable resources
- ▶ Viscose from sustainable forests (FSC-certified)
- ▶ Production moved from Asia to Europe to further reduce emissions
- ▶ High-performance headwear protects from falling skin cells or stray hairs
- ▶ Breathable and comfortable headwear
- ▶ Drapes easily
- ▶ Suitable for long shifts in the most intense surgical environments
- ▶ Tested for skin irritation, skin sensitisation and in vitro cytotoxicity according to EN ISO 10993



REF	DESCRIPTION	SIZE	PACK COUNT dispenser/carton
277403	Surgical hood James, tie-on, large sweatband, Blue	Universal	100 / 600

Sales Unit: Transport Carton

Embra® Surgical hood Gallant

REF: 277903

Embra® Headweares are designed to help prevent foreign particles such as hair or skin scales falling from medical personnel into the wound during surgical interventions. These very popular surgical hoods come with different special features and designs, such as integrated sweatbands for additional comfort, or open design for easier dressing placed on the head instead of over the head. Embra® surgical hood Gallant with shoulder protection is made in a soft and breathable viscose nonwoven material. Gallant integrates a sweatband for extra comfort and a tie-band for individual fit.

Key Features

- ▶ Universal size
- ▶ Shoulder protection
- ▶ Integrated sweatband
- ▶ Tie-band
- ▶ 80% viscose, 20% polyester meaning most of the materials are from renewable resources
- ▶ Viscose from sustainable forests (FSC-certified)
- ▶ Production moved from Asia to Europe to further reduce emissions
- ▶ High-performance headwear protects from falling skin cells or stray hairs
- ▶ Breathable and comfortable headwear
- ▶ Drapes easily
- ▶ Suitable for long shifts in the most intense surgical environments
- ▶ Tested for skin irritation, skin sensitisation and in vitro cytotoxicity according to EN ISO 10993



REF	DESCRIPTION	SIZE	PACK COUNT dispenser/carton
277903	Surgical hood Gallant, shoulder protection, tie-band, large sweatband, Green	Universal	50 / 300

Sales Unit: Transport Carton

Embra® Surgical hood Valiant

REF: 278003

Embra® Headweares are designed to help prevent foreign particles such as hair or skin scales falling from medical personnel into the wound during surgical interventions. These very popular surgical hoods come with different special features and designs, such as integrated sweatbands for additional comfort, or open design for easier dressing placed on the head instead of over the head. Embra® surgical hood Valiant with shoulder protection is made in a soft and breathable viscose nonwoven material. Valiant integrates a large sweatband in the forehead and the cheeks to secure extra comfort. Universal size with a soft binding around the face and a tie-band that allows for individual adjustments.

Key Features

- ▶ Universal size
- ▶ Shoulder protection
- ▶ Integrated sweatband
- ▶ Tie-band
- ▶ 80% viscose, 20% polyester meaning most of the materials are from renewable resources
- ▶ Viscose from sustainable forests (FSC-certified)
- ▶ Production moved from Asia to Europe to further reduce emissions
- ▶ High-performance headwear protects from falling skin cells or stray hairs
- ▶ Breathable and comfortable headwear
- ▶ Drapes easily
- ▶ Suitable for long shifts in the most intense surgical environments
- ▶ Tested for skin irritation, skin sensitisation and in vitro cytotoxicity according to EN ISO 10993



REF	DESCRIPTION	SIZE	PACK COUNT dispenser/carton
278003	Surgical hood Valiant, shoulder protection, tie-band, large sweatband, Blue	Universal	50 / 300

Sales Unit: Transport Carton

Embra® Surgical hood Anastasia

REF: 279803

Embra® Headweares are designed to help prevent foreign particles such as hair or skin scales falling from medical personnel into the wound during surgical interventions. These very popular surgical hoods come with different special features and designs, such as integrated sweatbands for additional comfort, or open design for easier dressing placed on the head instead of over the head. Embra® Surgical hood Anastasia operating helmet is especially designed for anesthetic staff, glasses users or those with limited hearing capabilities. The thin net over the ears makes it easier to hear each other in a noisy OR, it also makes it easy to use stethoscopes or place glasses. The hood is equipped with an extra-large sweatband for extra comfort. There is shoulder protection, a soft binding round the face and tie-band for individual fitting. Made in a soft and breathable viscose nonwoven material.

Key Features

- ▶ Universal size
- ▶ Shoulder protection
- ▶ Integrated sweatband
- ▶ Specially designed for anesthetic staff
- ▶ Recommended to be used by persons with bad hearing
- ▶ Tie-band
- ▶ 80% viscose, 20% polyester meaning most of the materials are from renewable resources
- ▶ Viscose from sustainable forests (FSC-certified)
- ▶ Production moved from Asia to Europe to further reduce emissions
- ▶ High-performance headwear protects from falling skin cells or stray hairs
- ▶ Breathable and comfortable headwear
- ▶ Drapes easily
- ▶ Suitable for long shifts in the most intense surgical environments
- ▶ Tested for skin irritation, skin sensitisation and in vitro cytotoxicity according to EN ISO 10993



REF	DESCRIPTION	SIZE	PACK COUNT dispenser/carton
279803	Surgical hood Anastasia, shoulder protection, tie-band, large sweatband, Blue	Universal	50 / 300

Sales Unit: Transport Carton

Embra® Surgical Hood Jess

REF: 279903

Embra® Headweares are designed to help prevent foreign particles such as hair or skin scales falling from medical personnel into the wound during surgical interventions. These very popular surgical hoods come with different special features and designs, such as integrated sweatbands for additional comfort, or open design for easier dressing placed on the head instead of over the head. Embra® Surgical Hood Jess is designed for users that don't want to pull a helmet over the head. Instead the helmet is placed on the head and closed with a tape strap underneath the chin. The tape makes it easy to adjust the size individually and the user will avoid irritating tie-bands. There is also shoulder protection and an extra-large sweatband to allow for extra comfort. Jess is new in our headwear family and has quickly become popular and is being asked for by medical staff who prefer more flexibility and possibilities for adjustments. Since this hood is without rubber band Jess has also become popular by medical staff who get skin irritation / have sensitive skin. Jess is made in a soft and breathable viscose nonwoven material.

Key Features

- ▶ Universal size
- ▶ Shoulder protection
- ▶ Integrated sweatband
- ▶ Specially designed for anesthetic staff
- ▶ Recommended to be used by persons with bad hearing
- ▶ Tie-band
- ▶ 80% viscose, 20% polyester meaning most of the materials are from renewable resources
- ▶ Viscose from sustainable forests (FSC-certified)
- ▶ Production moved from Asia to Europe to further reduce emissions
- ▶ High-performance headwear protects from falling skin cells or stray hairs
- ▶ Breathable and comfortable headwear
- ▶ Drapes easily
- ▶ Suitable for long shifts in the most intense surgical environments
- ▶ Tested for skin irritation, skin sensitisation and in vitro cytotoxicity according to EN ISO 10993



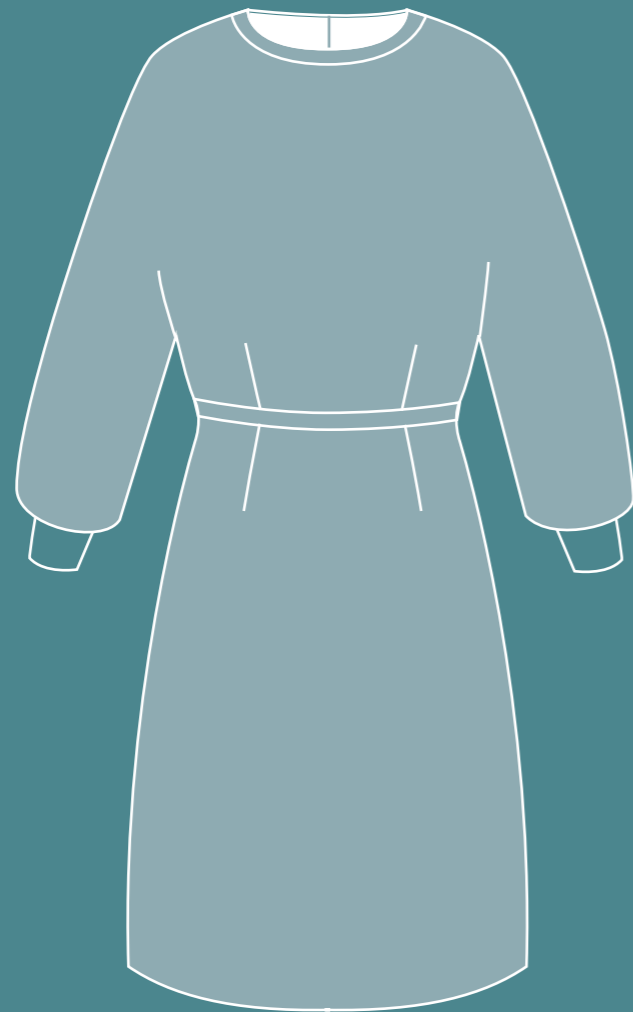
Thank you for choosing **Embra**®

Together we can make a positive difference.

REF	DESCRIPTION	SIZE	PACK COUNT dispenser/carton
279903	Surgical hood Jess, shoulder protection, large sweatband, Blue	Universal	50 / 300

Sales Unit: Transport Carton

evercare[®] Isolation gowns



evercare[®] Visitor gown with buttons

REF: 2712-01, 2714-01, 2716-01

evercare[®] Visitor gown can be used as visitor and patient gown. The gown is made of the same material as Clean Air suits which means low linting and low bacterial penetration to support infection control. Comfortable and warming cuffs in the arms that are in full length. Closed with buttons to allow for easy dress on and dress off. Comes in 3 sizes. Single use and Unisex.

Key Features

- ▶ Visitor gown can be used as well as a patient gown
- ▶ Made of SMS nonwoven for better protection
- ▶ Water repellent
- ▶ Anti-static treated
- ▶ Comfortable cuffs in the arm sleeves
- ▶ Userfriendly buttons
- ▶ Material properties meet EN13795-2 for Clean Air Suit
- ▶ low linting
- ▶ low bacterial penetration



REF	DESCRIPTION	SIZE	PACK COUNT dispenser/carton
2712-01	Visitor gown with buttons, blue, Blue	L	5 / 20
2714-01	Visitor gown with buttons, blue, Blue	XL	5 / 20
2716-01	Visitor gown with buttons, blue, Blue	XXL	5 / 20

Sales Unit: Transport Carton

evercare® Isolation gown Special

REF: 2733, 2734, 2735

evercare® Isolation gown Special is a comfortable, fluid protective gown for various uses in health care settings. The product is for single-use and non-sterile. Extra comfortable design made with knitted cuffs. Laminated in the front and sleeves for better fluid protection. Not laminated on the back to increase the breathability. Tie-bands in waist and Velcro in the neck for convenient adjustment to fit all. Available in several sizes.

Key Features

- ▶ Fluid impermeable body front and sleeves
- ▶ Cuffs around wrists
- ▶ Packed in 5 pcs per pouch
- ▶ Three sizes available
- ▶ Color: yellow

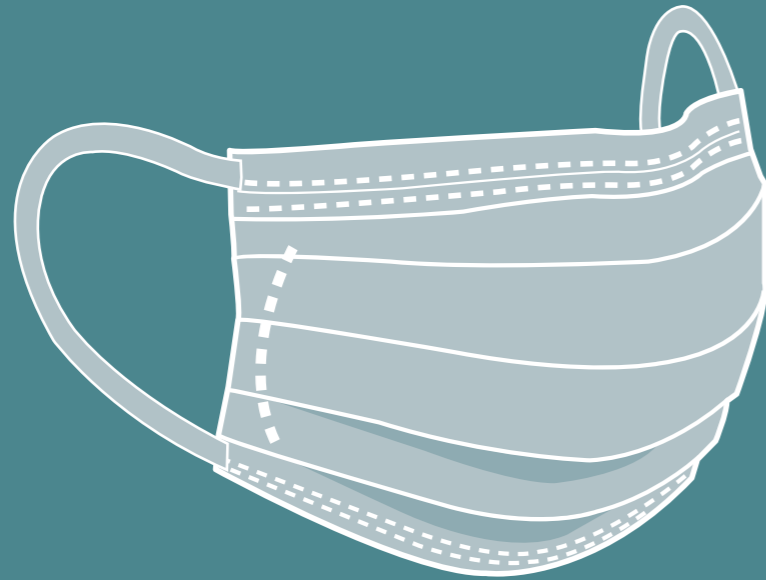


REF	DESCRIPTION	SIZE	PACK COUNT dispenser/carton
2733	Isolation gown Special, Yellow	M, length 115 cm	5 / 25
2734	Isolation gown Special, Yellow	L, length 135 cm	5 / 25
2735	Isolation gown Special, Yellow	XL, length 145 cm	5 / 25

Sales Unit: Transport Carton



evercare[®] Medical face masks



evercare[®] Medical face mask with earloops, type II

REF: 2882

evercare[®] Medical mask with earloops, type II provides a barrier to minimize the direct transmission of infective agents between medical staff and patient. It is an allround face mask with high filtration capacity and low breathing resistance. Recommended to be used during dry surgery, with no risk of splashes. The mask is slightly shorter in width than many other face masks but at the same time it is also wider when in open size. The design of the side sealing and the anchoring of the earloops help to reduce the gaping at the cheeks and makes the mask more conforming to the face. This overall design results in a deeper cup-shape, which is better conforming and provides a fitter coverage of the nose and mouth.

Key Features

- ▶ EN 14683:2019
- ▶ Bacterial Filtration Efficiency (BFE) ≥ 98%
- ▶ Single use
- ▶ Flexible nose wire for proper fit
- ▶ Designed to give an excellent /improved fit of the face mask for the user
- ▶ Comfortable elastic earloops design for reduced pressure to the ears



REF	DESCRIPTION	SIZE	PACK COUNT dispenser/carton
2882	Medical face mask with earloops, type II, non-sterile, White	165x90 mm	50 / 2500

Sales Unit: Transport Carton

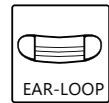
evercare® Medical Face Mask type II ear-loop blue

REF: 2887

evercare® Medical face mask, standard with earloops, type II provides a barrier to minimize the direct transmission of infective agents between medical staff and patient. It is an allround face mask with high filtration capacity and low breathing resistance, designed to give an excellent /improved fit of the face mask for the user. Recommended to be used during dry surgery, with no risk of splashes.

Key Features

- ▶ EN 14683:2019
- ▶ Bacterial Filtration Efficiency (BFE) ≥ 98%
- ▶ Single use
- ▶ Flexible nose wire for proper fit
- ▶ Color: Outer facing blue, inner facing white



REF	DESCRIPTION	SIZE	PACK COUNT dispenser/carton
2887	evercare® Medical Face Mask type II ear-loop, Blue	18 x 9 cm	50 / 300

Sales Unit: Transport Carton

evercare® Medical Face Mask type II ear-loop, green

REF: 2888

evercare® Medical face mask , standard with earloops, type II provides a barrier to minimize the direct transmission of infective agents between medical staff and patient. It is an allround face mask with high filtration capacity and low breathing resistance, designed to give an excellent /improved fit of the face mask for the user. Recommended to be used during dry surgery, with no risk of splashes.

Key Features

- ▶ EN 14683:2019
- ▶ Bacterial Filtration Efficiency (BFE) ≥ 98%
- ▶ Single use
- ▶ Flexible nose wire for proper fit
- ▶ Color: Outer facing green, inner facing white



REF	DESCRIPTION	SIZE	PACK COUNT dispenser/carton
2888	evercare® Medical Face Mask type II ear-loop, Green	18 x 9 cm	50 / 300

Sales Unit: Transport Carton

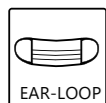
evercare[®] Medical face mask with earloops, type IIR

REF: 2881

evercare[®] Medical face mask with earloops, type II R provides a barrier to minimize the direct transmission of infective agents between medical staff and patient. It is a splash resistant mask offering protection against potentially contaminated fluid splashes. Recommended to be used during wet surgery. The mask is slightly shorter in width than many other face masks but at the same time it is also wider when in open size. The design of the side sealing and the anchoring of the earloops help to reduce the gaping at the cheeks and makes the mask more conforming to the face. This overall design results in a deeper cup-shape, which is better conforming and provides a fitter coverage of the nose and mouth.

Key Features

- ▶ EN 14683:2019
- ▶ Bacterial Filtration Efficiency (BFE) ≥ 98%
- ▶ Single use
- ▶ Flexible nose wire for proper fit
- ▶ Splash resistant
- ▶ Designed to give an excellent /improved fit of the face mask for the user



REF	DESCRIPTION	SIZE	PACK COUNT dispenser/carton
2881	Medical face mask with earloops, type IIR, non-sterile, White	165 x 90 mm	50 / 2500

Sales Unit: Transport Carton

evercare[®] Medical face mask with tie-bands, type IIR

REF: 2884

evercare[®] Medical face mask with tie-bands, type II R provides a barrier to minimize the direct transmission of infective agents between medical staff and patient. It is a splash resistant mask offering protection against potentially contaminated fluid splashes. Recommended to be used during wet surgery.

Key Features

- ▶ EN 14683:2019
- ▶ Bacterial Filtration Efficiency (BFE) ≥ 98%
- ▶ Single use
- ▶ Flexible nose wire for proper fit
- ▶ Splash resistant
- ▶ Color: Outer facing blue, inner facing white
- ▶ Anatomic pleated folding limiting inward leakage



REF	DESCRIPTION	SIZE	PACK COUNT dispenser/carton
2884	Medical face mask with tie-bands, type IIR, non-sterile, Blue	175 x 95 mm	50 / 1200

Sales Unit: Transport Carton

evercare[®] Medical Face Mask type IIR tieband,antifog,wide,white

REF: 2885

evercare[®] Medical face mask with tie-bands, type IIR provides a barrier to minimize the direct transmission of infective agents between medical staff and patient. It is a splash resistant mask offering protection against potentially contaminated fluid splashes. Recommended to be used during wet surgery.

Key Features

- ▶ EN 14683:2019
- ▶ Bacterial Filtration Efficiency (BFE) ≥ 98%
- ▶ Single use
- ▶ Flexible nose wire for proper fit
- ▶ Splash resistant
- ▶ Anti-fog
- ▶ Soft inner layer for comfort

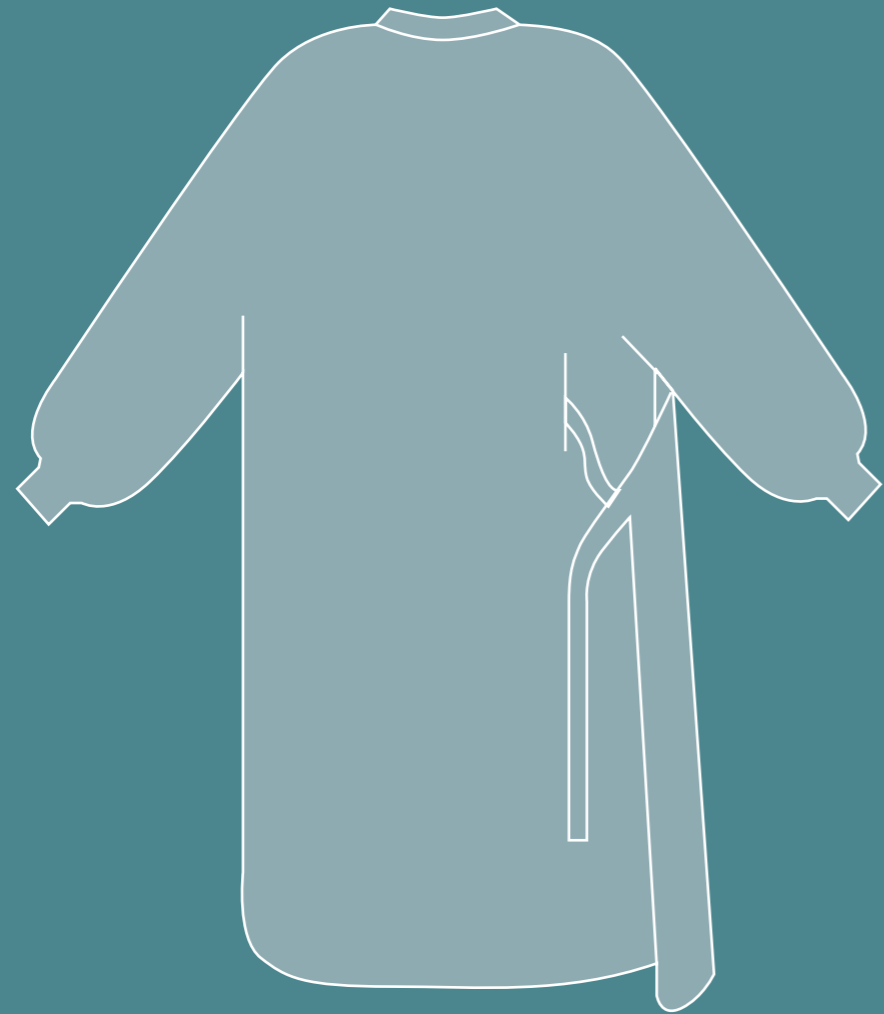


REF	DESCRIPTION	SIZE	PACK COUNT dispenser/carton
2885	evercare [®] Medical Face Mask type IIR tie-band, antifog, wide, White	19 x 9 cm	50 / 300

Sales Unit: Transport Carton



evercare[®]
OP-gowns



evercare® XP Standard OP-Gowns, sterile

REF: 2504, 2505, 2507, 2509, 2510, 2513, 2514, 2515, 2517, 2519, 2520

evercare® XP Standard OP-Gowns are suitable for dry operations. Made in a soft SMS material with antistatic and alcohol repellent treatment for enhanced user protection. All evercare® OP-Gowns complies with the requirements of EN 13795-1, provide an effective barrier to body fluids, skin particles and microbes and are designed for optimal comfort and ease of movement. The adjustable Velcro in the neck enables optimal fit while securing adjustments. High quality cuffs for improved comfort and tight fit round wrists. The gown is sterilized with EO-gas and packed in easy-to-open unit pouches. State-of-the-art packaging system with handy functional dispenser and labelling as per EN15223-1 and EN ISO 20417. Unit packs are supplied with barcoded removable labels for improved traceability.

Key Features

- ▶ Good protection and Xtra comfort, antistatic and alcohol repellent treated
- ▶ Ultrasonic heat sealed seams for sleeves and shoulders to increase comfort by reducing excessive materials causing discomfort
- ▶ Gown with overlapping back and adjustable Velcro in the neck enables optimal fit for individual adjustments.
- ▶ Clear stamp with size and performance type.
- ▶ High quality cuffs for improved comfort and tight fit round wrists.
- ▶ Belt card with clear indications of sterile / non-sterile for secure donning.
- ▶ Book-folding enabling unpacking and donning without risk for contamination.
- ▶ SMS material with low linting and very high abrasion resistance



REF	DESCRIPTION	SIZE	PACK COUNT dispenser/carton
2504	XP Standard OP-Gown, sterile, Blue	M-short	21 / 42
2505	XP Standard OP-Gown, sterile, Blue	M	20 / 40
2507	XP Standard OP-Gown, sterile, Blue	L	20 / 40
2509	XP Standard OP-Gown, sterile, Blue	XL	18 / 36
2510	XP Standard OP-Gown, sterile, Blue	XXL	18 / 36
2513	XP Standard OP-Gown with hand towels, sterile, Blue	XXL-long	14 / 28
2514	XP Standard OP-Gown with hand towels, sterile, Blue	M-short	21 / 42
2515	XP Standard OP-Gown with hand towels, sterile, Blue	M	20 / 40
2517	XP Standard OP-Gown with hand towels, sterile, Blue	L	20 / 40
2519	XP Standard OP-Gown with hand towels, sterile, Blue	XL	18 / 36
2520	XP Standard OP-Gown with hand towels, sterile, Blue	XXL	18 / 36

Sales Unit: Transport Carton

evercare® XP Special OP-Gowns, sterile

REF: 2534, 2535, 2537, 2539, 2540, 2544, 2545, 2547, 2549, 2550

evercare® XP Special OP-Gowns are suitable for procedures with medium to high quantities of fluids. Made in a soft SMS material with antistatic and alcohol repellent treatment for enhanced user protection. evercare® XP Special is reinforced with a breathable material in the critical zone, in the front and in the sleeves, to maximize protection against contamination of the surgical wound and to protect the user at wet procedures. All evercare® OP-Gowns complies with the requirements of EN 13795-1, provide an effective barrier to body fluids, skin particles and microbes and are designed for optimal comfort and ease of movement. The adjustable Velcro in the neck enables optimal fit while securing adjustments. The gown is sterilized with EO-gas and packed in easy-to-open unit pouches. State-of-the-art packaging system with handy functional dispenser and labeling as per EN15223-1 and EN ISO 20417. Unit packs are supplied with barcoded removable labels for improved traceability.

Key Features

- ▶ Good protection and Xtra comfort, antistatic and alcohol repellent treated
- ▶ Ultrasonic heat sealed seams for sleeves and shoulders to increase comfort by reducing excessive materials causing discomfort
- ▶ Gown with overlapping back and adjustable Velcro in the neck enables optimal fit for individual adjustments
- ▶ Clear stamp with size and performance type
- ▶ Belt card with clear indications of sterile / non-sterile for secure donning
- ▶ High quality cuffs for improved comfort and tight fit round wrists
- ▶ Book-folding enabling unpacking and donning without risk for contamination
- ▶ SMS material with low linting and very high abrasion resistance



REF	DESCRIPTION	SIZE	PACK COUNT dispenser/carton
2534	XP Special OP-Gown, sterile, Blue	M-short	21 / 42
2535	XP Special OP-Gown, sterile, Blue	M	20 / 40
2537	XP Special OP-Gown, sterile, Blue	L	20 / 40
2539	XP Special OP-Gown, sterile, Blue	XL	18 / 36
2540	XP Special OP-Gown, sterile, Blue	XXL	18 / 36
2544	XP Special OP-Gown with hand towels, sterile, Blue	M-short	21 / 42
2545	XP Special OP-Gown with hand towels, sterile, Blue	M	20 / 40
2547	XP Special OP-Gown with hand towels, sterile, Blue	L	20 / 40
2549	XP Special OP-Gown with hand towels, sterile, Blue	XL	18 / 36
2550	XP Special OP-Gown with hand towels, sterile, Blue	XXL	18 / 36

Sales Unit: Transport Carton

evercare® SUPRA Standard OP-Gowns, sterile

REF: 259011, 259021, 259031, 259041, 259051, 259061, 259071, 259081, 259091, 259101, 259111, 259121, 259131, 259141

evercare® SUPRA OP-Gown is a soft SMS gown designed to provide ultimate protection and super comfort. The gown is suitable for procedures with low to medium to high quantities of fluids and high comfort demands. SUPRA OP-Gown material has antistatic and alcohol repellent treatment for enhanced user protection and has been developed from a sustainable perspective. That's why it has packaging made from FSC certified material and renewable sources. The OP-Gown comes with optimized packaging to ensure you get a great product in a smart dispenser using less material supporting your ambitions to reduce waste. evercare® SUPRA High Performance is reinforced with a breathable material in the critical zone, in the front and in the sleeves, to maximize protection against contamination of the surgical wound and to protect the user at wet procedures. All evercare® OP-Gowns complies with the requirements of EN 13795-1, provide an effective barrier to body fluids, skin particles and microbes and are designed for optimal comfort and ease of movement. The adjustable Velcro in the neck enables optimal fit while securing adjustments. High quality cuffs for improved comfort and tight fit round wrists. The gown is sterilized with EO-gas and packed in easy-to-open unit pouches. State-of-the-art packaging system with handy functional dispenser and labelling as per standards EN 15223-1 and EN ISO 20417.

Unit packs are supplied with barcoded removable labels for improved traceability.

Key Features

- ▶ Good protection with high breathability
- ▶ Super comfort with soft SMS
- ▶ Antistatic and alcohol repellent treated
- ▶ Very high abrasion resistance
- ▶ Extra soft stretchable neckline material for higher comfort
- ▶ Ultrasonic sealed sleeves to increase comfort by reducing excessive materials causing discomfort
- ▶ Gown with overlapping back and adjustable Velcro in the neck enables optimal fit for individual adjustments
- ▶ Clear stamp with size and performance type
- ▶ High quality cuffs for improved comfort and tight fit round wrists
- ▶ Belt card with clear indications of sterile / non-sterile for secure donning
- ▶ Book-folding enabling unpacking and donning without risk for contamination
- ▶ SMS material with low linting
- ▶ Comfortable design providing ease of movement
- ▶ All sizes available with or without 2 hand towels



REF	DESCRIPTION	SIZE	PACK COUNT dispenser/carton
259011	SUPRA SP OP-Gown, Blue	Size: M-short Lenght: 120 cm	21/42
259021	SUPRA SP OP-Gown, Blue	Size: M Lenght: 131 cm	20/40
259031	SUPRA SP OP-Gown, Blue	Size: L Lenght: 142 cm	20/40
259041	SUPRA SP OP-Gown, Blue	Size: XL-short Lenght: 142 cm	20/40
259051	SUPRA SP OP-Gown, Blue	Size: XL Lenght: 152 cm	18/36
259061	SUPRA SP OP-Gown, Blue	Size: XXL Lenght: 158 cm	18/36
259071	SUPRA SP OP-Gown, Blue	Size: XXL-long Lenght: 170 cm	14/28
259081	SUPRA SP OP-Gown with hand towels, Blue	Size: M-short Lenght: 120 cm	21/42
259091	SUPRA SP OP-Gown with hand towels, Blue	Size: M Lenght: 131 cm	20/40
259101	SUPRA SP OP-Gown with hand towels, Blue	Size: L Lenght: 142 cm	20/40
259111	SUPRA SP OP-Gown with hand towels, Blue	Size: XL-short Lenght: 142 cm	20/40
259121	SUPRA SP OP-Gown with hand towels, Blue	Size: XL Lenght: 152 cm	18/36
259131	SUPRA SP OP-Gown with hand towels, Blue	Size: XXL Lenght: 158 cm	18/36
259141	SUPRA SP OP-Gown with hand towels, Blue	Size: XXL-long Lenght: 170 cm	14/28

evercare® SUPRA Special OP-Gowns, sterile

REF: 259151, 259161, 259171, 259181, 259191, 259201, 259211, 259221, 259231, 259241, 259251, 259261, 259271, 259281

evercare® SUPRA OP-Gown is a soft SMS gown designed to provide ultimate protection and super comfort. The gown is suitable for procedures with medium to high quantities of fluids and high comfort demands. SUPRA OP-Gown material has antistatic and alcohol repellent treatment for enhanced user protection and has been developed from a sustainable perspective. That's why it has packaging made from FSC certified material and renewable sources. The OP-Gown comes with optimized packaging to ensure you get a great product in a smart dispenser using less material supporting your ambitions to reduce waste. evercare® SUPRA High Performance is reinforced with a breathable material in the critical zone, in the front and in the sleeves, to maximize protection against contamination of the surgical wound and to protect the user at wet procedures. All evercare® OP-Gowns complies with the requirements of EN 13795-1, provide an effective barrier to body fluids, skin particles and microbes and are designed for optimal comfort and ease of movement. The adjustable Velcro in the neck enables optimal fit while securing adjustments. High quality cuffs for improved comfort and tight fit round wrists. The gown is sterilized with EO-gas and packed in easy-to-open unit pouches. State-of-the-art packaging system with handy functional dispenser and labelling as per EN15223-1 and EN ISO 20417. Unit packs are supplied with barcoded removable labels for improved traceability.

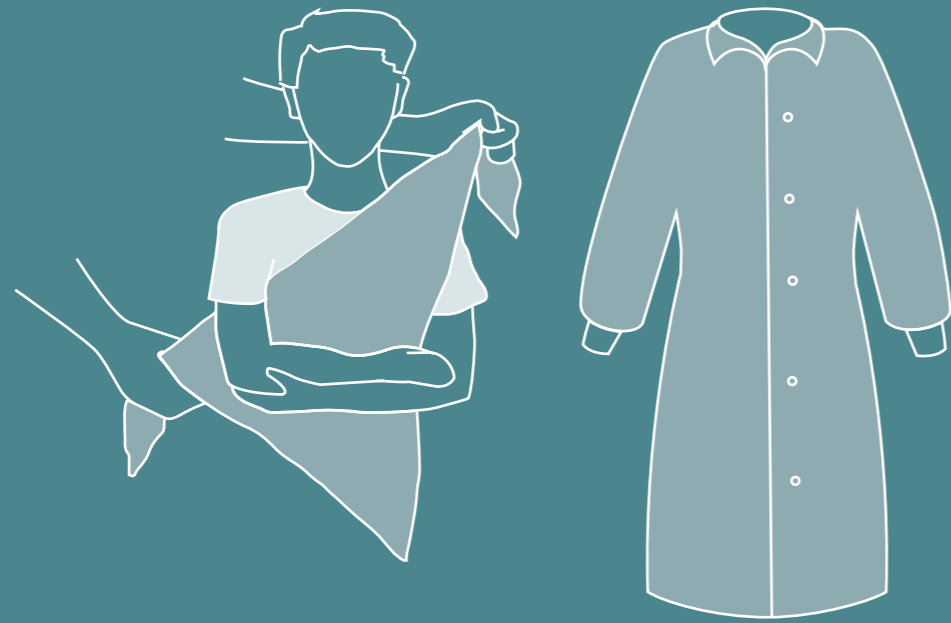
Key Features

- ▶ Good protection with high breathability
- ▶ Super comfort with soft SMS
- ▶ Antistatic and alcohol repellent treated
- ▶ Very high abrasion resistance
- ▶ Extra soft stretchable neckline material for higher comfort
- ▶ Reinforcement with breathable comfort layer on both arms and chest
- ▶ Ultrasonic sealed sleeves to increase comfort by reducing excessive materials causing discomfort
- ▶ Gown with overlapping back and adjustable Velcro in the neck enables optimal fit for individual adjustments
- ▶ Clear stamp with size and performance type
- ▶ High quality cuffs for improved comfort and tight fit round wrists
- ▶ Belt card with clear indications of sterile / non-sterile for secure donning
- ▶ Book-folding enabling unpacking and donning without risk for contamination
- ▶ SMS material with low linting
- ▶ Comfortable design providing ease of movement
- ▶ All sizes available with or without 2 hand towels
- ▶ HP product variant is suitable for procedures with medium to high amount of fluids.



REF	DESCRIPTION	SIZE	PACK COUNT dispenser/carton
259151	SUPRA HP OP-Gown, Blue	Size: M-short Lenght: 120 cm	18/36
259161	SUPRA HP OP-Gown, Blue	Size: M Lenght: 131 cm	16/32
259171	SUPRA HP OP-Gown, Blue	Size: L Lenght: 142 cm	16/32
259181	SUPRA HP OP-Gown, Blue	Size: XL-short Lenght: 142 cm	16/32
259191	SUPRA HP OP-Gown, Blue	Size: XL Lenght: 152 cm	14/28
259201	SUPRA HP OP-Gown, Blue	Size: XXL Lenght: 158 cm	14/28
259211	SUPRA HP OP-Gown, Blue	Size: XXL-long Lenght: 170 cm	10/20
259221	SUPRA HP OP-Gown with hand towels, Blue	Size: M-short Lenght: 120 cm	18/36
259231	SUPRA HP OP-Gown with hand towels, Blue	Size: M Lenght: 131 cm	16/32
259241	SUPRA HP OP-Gown with hand towels, Blue	Size: L Lenght: 142 cm	16/32
259251	SUPRA HP OP-Gown with hand towels, Blue	Size: XL-short Lenght: 142 cm	16/32
259261	SUPRA HP OP-Gown with hand towels, Blue	Size: XL Lenght: 152 cm	14/28
259271	SUPRA HP OP-Gown with hand towels, Blue	Size: XXL Lenght: 158 cm	14/28
259281	SUPRA HP OP-Gown with hand towels, Blue	Size: XXL-long Lenght: 170 cm	10/20

Patient clothing & care



evercare® Visitor gown with buttons

REF: 2712-01, 2714-01, 2716-01

evercare® Visitor gown can be used as visitor and patient gown. The gown is made of the same material as Clean Air suits which means low linting and low bacterial penetration to support infection control. Comfortable and warming cuffs in the arms that are in full length. Closed with buttons to allow for easy dress on and dress off. Comes in 3 sizes. Single use and Unisex.

Key Features

- ▶ Visitor gown can be used as well as a patient gown
- ▶ Made of SMS nonwoven for better protection
- ▶ Water repellent
- ▶ Anti-static treated
- ▶ Comfortable cuffs in the arm sleeves
- ▶ Userfriendly buttons
- ▶ Material properties meet EN13795-2 for Clean Air Suit
- ▶ low linting
- ▶ low bacterial penetration



REF	DESCRIPTION	SIZE	PACK COUNT dispenser/carton
2712-01	Visitor gown with buttons, blue, Blue	L	5 / 20
2714-01	Visitor gown with buttons, blue, Blue	XL	5 / 20
2716-01	Visitor gown with buttons, blue, Blue	XXL	5 / 20

Sales Unit: Transport Carton

evercare[®] Medi Blanket

REF: 5300

evercare[®] Medi Blanket is available in two sizes, choose between full length and half-length for thermal comfort and warmth. Single use blanket for patients in healthcare settings, manufactured in controlled environment to support infection control.

Key Features

- ▶ Single use
- ▶ Available in two sizes



REF	DESCRIPTION	SIZE	PACK COUNT dispenser/carton
5300	Medi Blanket, single pack, non-sterile, White	Large 130x210 cm	1 / 34

Sales Unit: Transport Carton

SELEFA[®] Stretcher Sheet

REF: 500511, 500512, 500513, 500514

Disposable stretcher sheet is designed with polyethylene-backed paper tissue offers fluid holdout for reliable hygienic protection.

Key Features

- ▶ Waterproof



REF	DESCRIPTION	SIZE	PACK COUNT dispenser/carton
500511	Stretcher Sheet, Offwhite	38 x 45 cm	0 / 1000
500512	Stretcher Sheet, Offwhite	57 x 80 cm	0 / 500
500513	Stretcher Sheet, Offwhite	57 x 170 cm	0 / 200
500514	Stretcher Sheet, Offwhite	57 x 220 cm	0 / 200

Sales Unit: Transport Carton

SELEFA® Pillowcase

REF: 3030751, 3030752

Disposable green or transparent, lightly embossed pillow case to provide protection for the pillow

Key Features

- ▶ Disposable green or transparent, lightly embossed pillow case to provide protection for the pillow.
- ▶ In a roll.
- ▶ PVC-free and Latex-free.



REF	DESCRIPTION	SIZE	PACK COUNT dispenser/carton
3030751	Pillowcase, Transparent	50cm x 70cm	50 / 1000
3030752	Pillowcase, Green	50cm x 75cm	100 / 1500

Sales Unit: Transport Carton

SELEFA® Ultra-Light 140 Draw Sheet

REF: 3500334

SELEFA® Ultra-Light 140 Draw Sheet has blue reinforcement threads and fluid barriers for higher security.

Key Features

- ▶ Chlorine Free treated tissues
- ▶ Transparent film with blue polyester



REF	DESCRIPTION	SIZE	PACK COUNT dispenser/carton
3500334	Draw sheet special with threads, Transparent/Blue	80 x 140 cm	100 / 100

Sales Unit: Transport Carton



SELEFA® Standard Draw Sheet

REF: 3500335

SELEFA® Standard Draw Sheet designed to cover mattresses to absorb leakages, reduce odor and maintain dryness. A polyethylene/tissue laminate with fluid barriers.

Key Features

- ▶ Tissue layer absorbs the fluids
- ▶ Poly layer offers a fluid barrier protection
- ▶ Fluid barriers



REF	DESCRIPTION	SIZE	PACK COUNT dispenser/carton
3500335	Draw sheet Standard, White/Blue	80 x 140 cm	0 / 100

Sales Unit: Transport Carton



SELEFA® Examination Table Crepe

REF: 3500515, 3500516, 3500517

Disposable examination crepe in a roll protects examination tables from dirt and moisture while offering comfort and protection for patients.

Key Features

- ▶ Strong absorbent
- ▶ In a roll



REF	DESCRIPTION	SIZE	PACK COUNT dispenser/carton
3500515	Examination Table Crepe, Offwhite	40 cm x 195 m	0 / 2
3500516	Examination Table Crepe, Offwhite	50 cm x 195 m	0 / 2
3500517	Examination Table Crepe, Offwhite	60 cm x 195 m	0 / 2

Sales Unit: Transport Carton



SELEFA® Examination Table Crepe

REF: 3500520, 3500521

Disposable examination crepe in a roll protects examination tables from dirt and moisture while offering comfort and protection for patients.



Key Features

- ▶ Strong absorbent
- ▶ Folded

REF	DESCRIPTION	SIZE	PACK COUNT dispenser/carton
3500520	Protective Drape	40 x 36 cm	200 / 800
3500521	Protective Drape	40 x 38 cm	200 / 800

Sales Unit: Transport Carton



SELEFA® Bib

REF: 3500729

SELEFA® Bib is soft and light weight with good fluid absorption on the front layer and fluid resistant at the back layer.

Key Features

- ▶ Easy to put on
- ▶ Feature pocket as spill and crumb catcher
- ▶ Front layer (Tissue) absorbs liquid and back layer (PE) serves as liquid barrier.
- ▶ Neck tie fastening best used for patients that might be fidgety or unable to keep still.



REF	DESCRIPTION	SIZE	PACK COUNT dispenser/carton
3500729	Bib with pocket and neck tie fastening, White	37 x 66 cm	125 / 500

Sales Unit: Transport Carton



SELEFA® Triangular sling

REF: 222416

Simple arm sling made of polypropylene nonwoven intended to support and immobilize forearm, upper arm and wrist when injured.



Key Features

- ▶ Soft nonwoven material comfortable for skin contact
- ▶ Typical use for arm holding flat on chest
- ▶ Packed in individual PE pouch

REF	DESCRIPTION	SIZE	PACK COUNT dispenser/carton
222416	Triangular sling, nonwoven, white, White	95x95x135 cm	1 / 50

Sales Unit: Transport Carton



Embra® Garbage Bag

REF: 3210605

Embra Garbage bag is made of 50% recycled plastic to decrease its impact on the environment.

Key Features

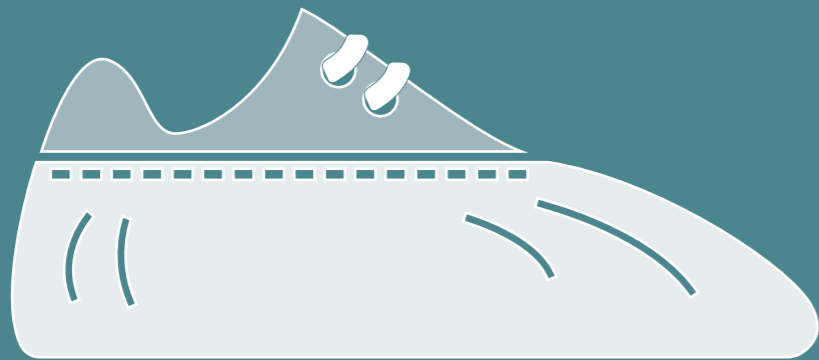
- ▶ 50% recycled polyethylene.
- ▶ This product uses a high degree of recycled raw material in comparison with a similar Evercare Medical garbage bag (minimum 50%).
- ▶ Environmental factsheet available.



REF	DESCRIPTION	SIZE	PACK COUNT dispenser/carton
3210605	Embra® Garbage Bag 28L White, White	520x550mm	100 / 1000

Sales Unit: Transport Carton

Shoe covers



SELEFA® Shoe Covers (vacuum pack)

REF: 211553, 211554, 211555

Disposable SELEFA® Shoe cover is a practical and economical personal protective equipment (PPE) that helps workers maintain environmental integrity in places like hospitals, cleanrooms and laboratories and can help protect footwear from splashes or stains caused by mild chemicals. It is an easy to wear product that comes in different sizes and colors and thickness to fit all needs

Key Features

- ▶ Easy to put on.
- ▶ Different colors and sizes available.
- ▶ Single use.
- ▶ Easy-Open vacuum bag.
- ▶ Packaging way that saves time in unpacking.



REF	DESCRIPTION	SIZE	PACK COUNT dispenser/carton
211553	Shoe cover, embossed, White	15 x 40cm	50 / 1000
211554	Shoe cover, embossed, Blue	15 x 41cm	100 / 2000
211555	Shoe cover, embossed, Blue	15 x 45cm	100 / 2000

Sales Unit: Transport Carton

Embra® Shoe Cover

REF: 3211554, 3211555

Embra® Shoe cover is made of 50% recycled plastic to decrease its impact on the environment.

Key Features

- ▶ 50% recycled material
- ▶ Fully functional, disposable shoe covers for hospital environments.
- ▶ Packed in hygienic vacuum bags.
- ▶ Designed for easy use and good fit.
- ▶ Unique surgical green colour.
- ▶ Easy to put on
- ▶ Single use



REF	DESCRIPTION	SIZE	PACK COUNT dispenser/carton
3211554	Embra® Shoe Cover, Green	15x41	100 / 2000
3211555	Embra® Shoe Cover, Green	15x45	100 / 2000

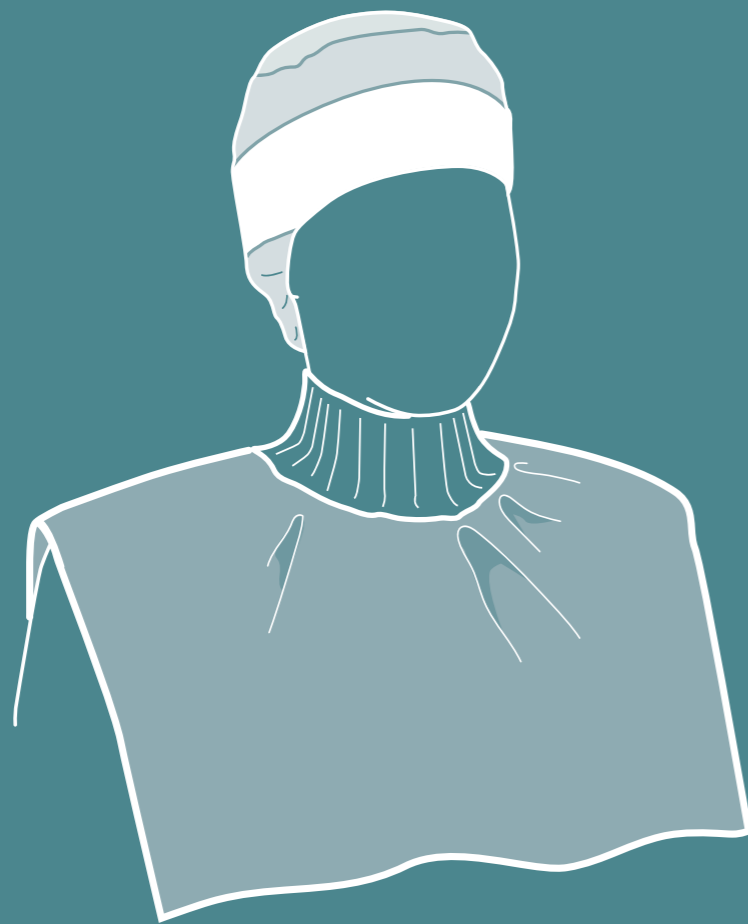
Sales Unit: Transport Carton



Thank you for choosing **Embra**®

Together we can make a positive difference.

evercare® Ponchos



evercare® Turtleneck poncho

REF: 5026980

evercare® Turtleneck poncho with a white knitted neckline for extra warmth and comfort which can be used by both staff and patients when needed to stay warm. One size fits all.

Key Features

- ▶ evercare® poncho with turtleneck is comfortable and warm to wear.
- ▶ Can be used for both staff and patients when needed to stay warm.
- ▶ Soft and breathable non-woven material with a very low linting level.
- ▶ The neck cuff has a really good elasticity which allows it to be used by all irrespective of size.

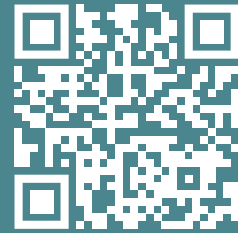


REF	DESCRIPTION	SIZE	PACK COUNT dispenser/carton
5026980	Turtleneck poncho with knitted neckline, Blue	56 x 46 cm	40 / 400

Sales Unit: Transport Carton

evercare[®] medical

We care more



evercare-medical.com



Caring for the future



Solutions for premium care



Affordable solutions for care

Evercare Medical AB is a partner that enables better lives for patients, facilitates everyday life for healthcare employees and contributes to lower care costs. We strive to reduce the environmental impact and, together with our suppliers, to improve working conditions throughout the value chain.

September 1, 2023