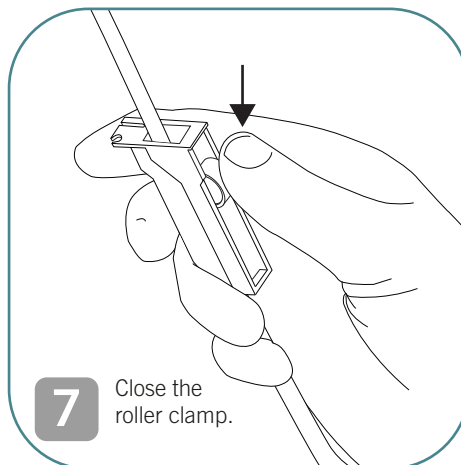
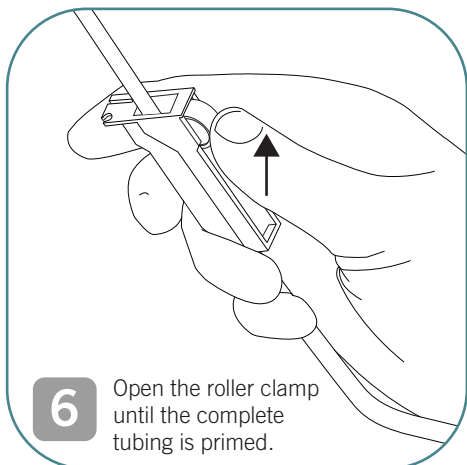
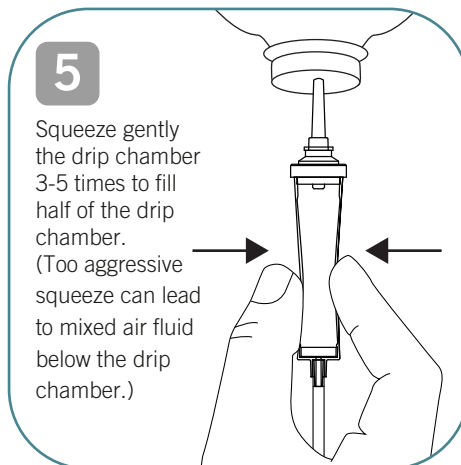
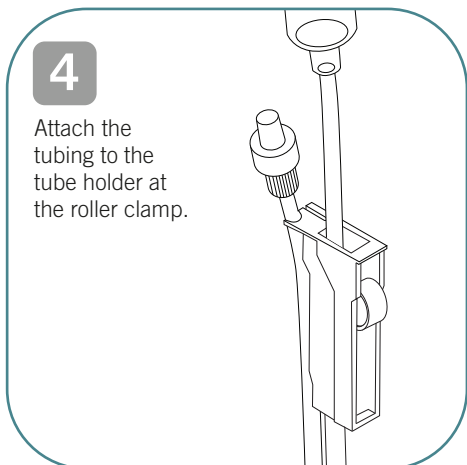
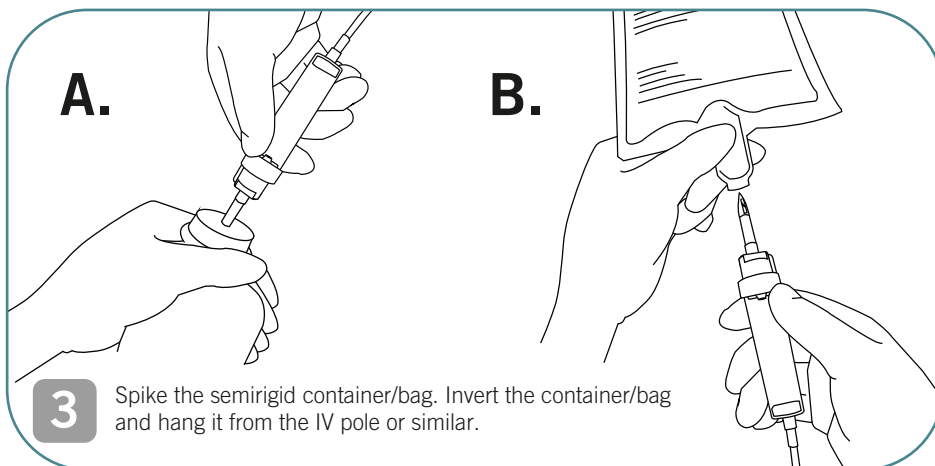
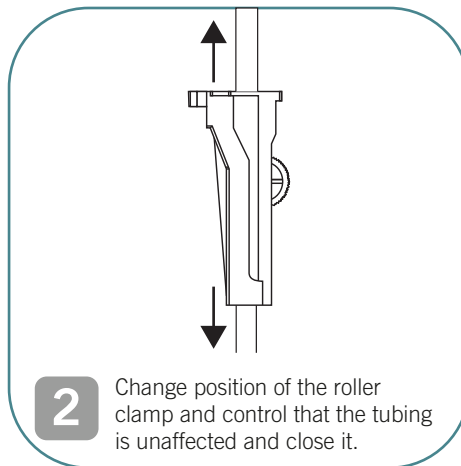
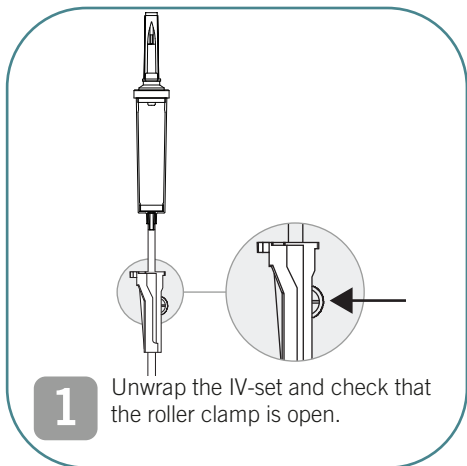


Priming evercare® inLine, unvented

Priming recommendation to prime evercare® inLine infusion set when using semirigid container or infusion bag.
Never use a glass bottle with unvented infusion set.

REF

10507-02
10508-01
10509-01
10510-01
10511-01
10512-01
10513-02
10514-01
10572-01
10597
10598
10599



Contact person:

! See the package for complete IFU instructions for use, this is only a guide for users !

DO NOT OVER-TIGHTEN connections. **DO NOT USE** any instruments to tighten connections

Tip:
Glass and non fully collapsible containers: Keep the vent closed during spiking and priming. Only open the vent flap when venting is required.

evercare®
medical
We care more

www.evercare-medical.com