

evercare[®] inLine monoset

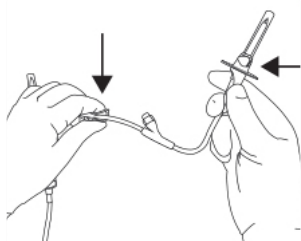
REF: 10515-01, 10516-02, 10517-02, 10518-02, 10576-01, 10583-02.

With needle free connector.

Please note! See the package for complete IFU instructions for use, this is only a guide for users.
DO NOT OVER-TIGHTEN connections. DO NOT USE any instruments to tighten connections.

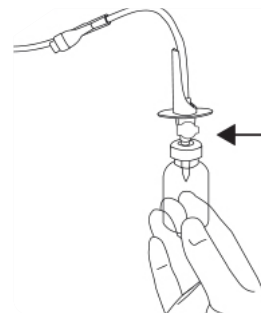
1

Unwrap the set. Close the clamp on side tubing, make sure the air vent is closed.



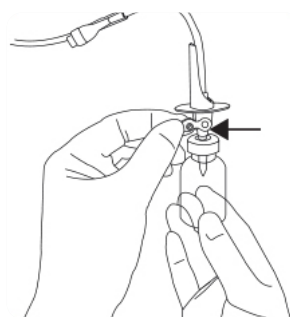
2

Stick the side spike through the membrane into drug vial.



3

Open the air vent on the side tubing.



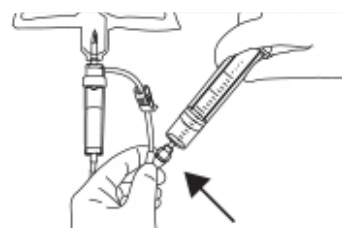
4 Fill the drug vial

A. Hold up the infusion bag and open the side clamp. Fill the drug vial half full, close the clamp.



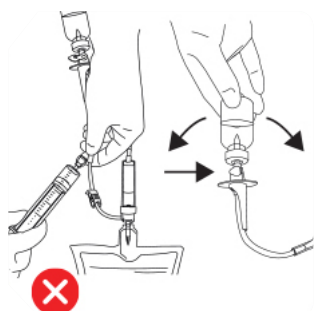
Or

B. Attach a syringe to the needle free connector, fill the drug vial half full.



To minimize a blocked filter:

- Never infuse fluid into vial when inverted.
- Never shake the vial when inverted.



evercare® inLine monoset

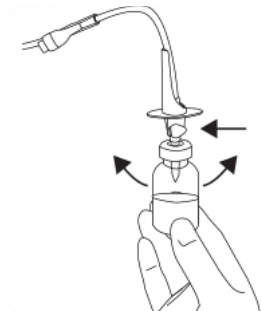
REF: 10515-01, 10516-02, 10517-02, 10518-02, 10576-01, 10583-02.

With needle free connector.

Please note! See the package for complete IFU instructions for use, this is only a guide for users.
DO NOT OVER-TIGHTEN connections. DO NOT USE any instruments to tighten connections.

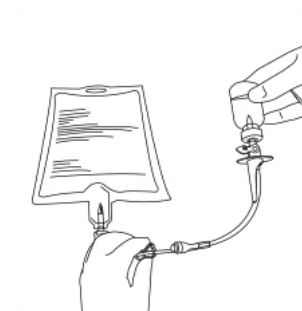
5

Close the air vent. Shake the vial side to side until the substance is dissolved.



6

Open the air vent. Turn the drug vial upside down and raise it over the level of the infusion bag. Open the side clamp.



7

When the drug is transferred to the infusion bag, close the clamp and the air vent. Leave the empty bottle on the side tubing.

